

Département de l'Yonne

COMMUNAUTE DE COMMUNES DE
LA VANNE ET DU PAYS D'OTHE



DOCUMENT APPROUVE

PLAN LOCAL D'URBANISME INTERCOMMUNAL

5. ANNEXES

5.4 Bois soumis au régime forestier

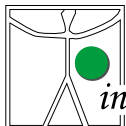
Pièce n°5.4

Arrêté par délibération du Conseil
Communautaire : le 20/08/2019
Approuvé par délibération du Conseil
Communautaire : le 26/05/2021

INITIATIVE Aménagement et Développement

Adresse : 4, Passage Jules DIDIER - 70000
VESOUL

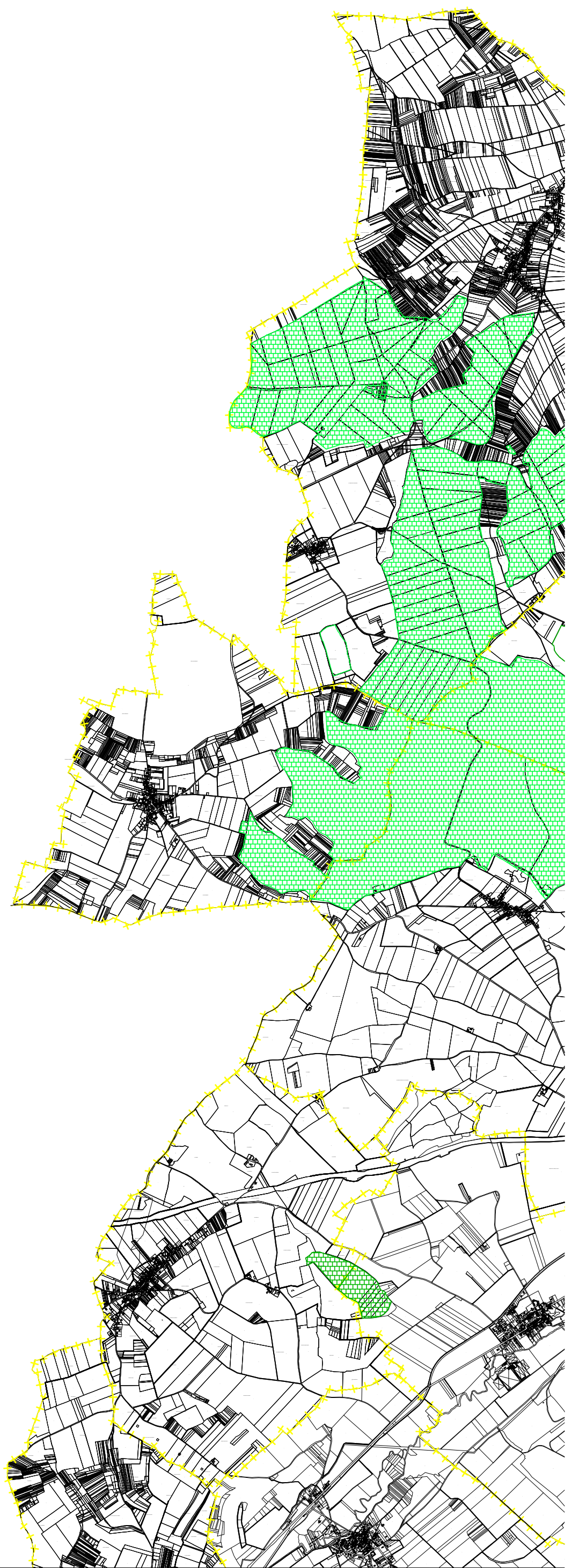
Tél : 03.84.75.46.47 - Fax : 03.84.75.31.69
initiativead@orange.fr



initiative

Agence de Besançon
Tél : 03.81.83.53.29 - initiativead25@orange.fr

- Forêts Communales
- Forêts Domaniales
- Forêts I.I.B.R.B.S
- Limites communales

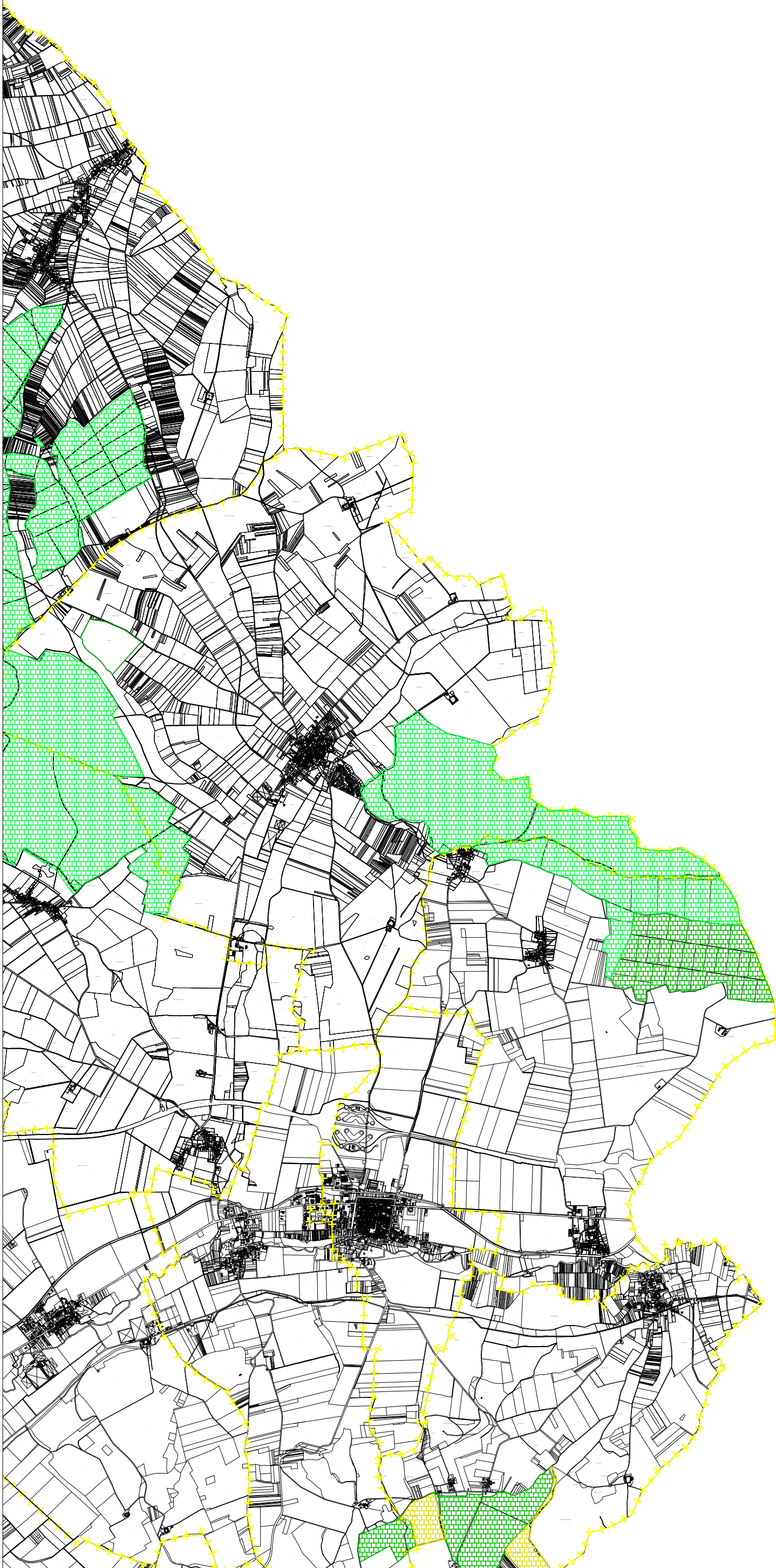


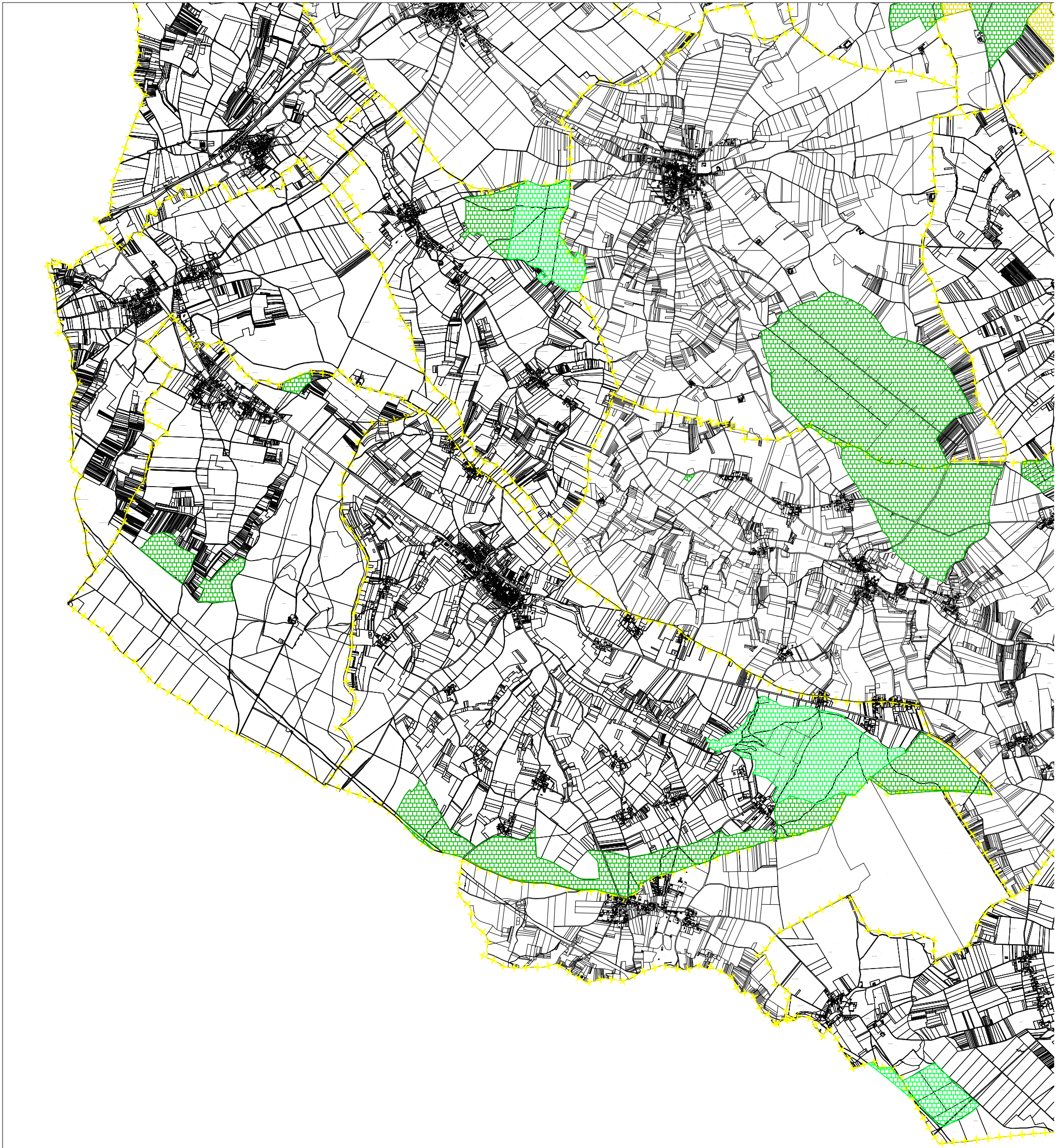
Forêts Communales





Forêts Domaniales

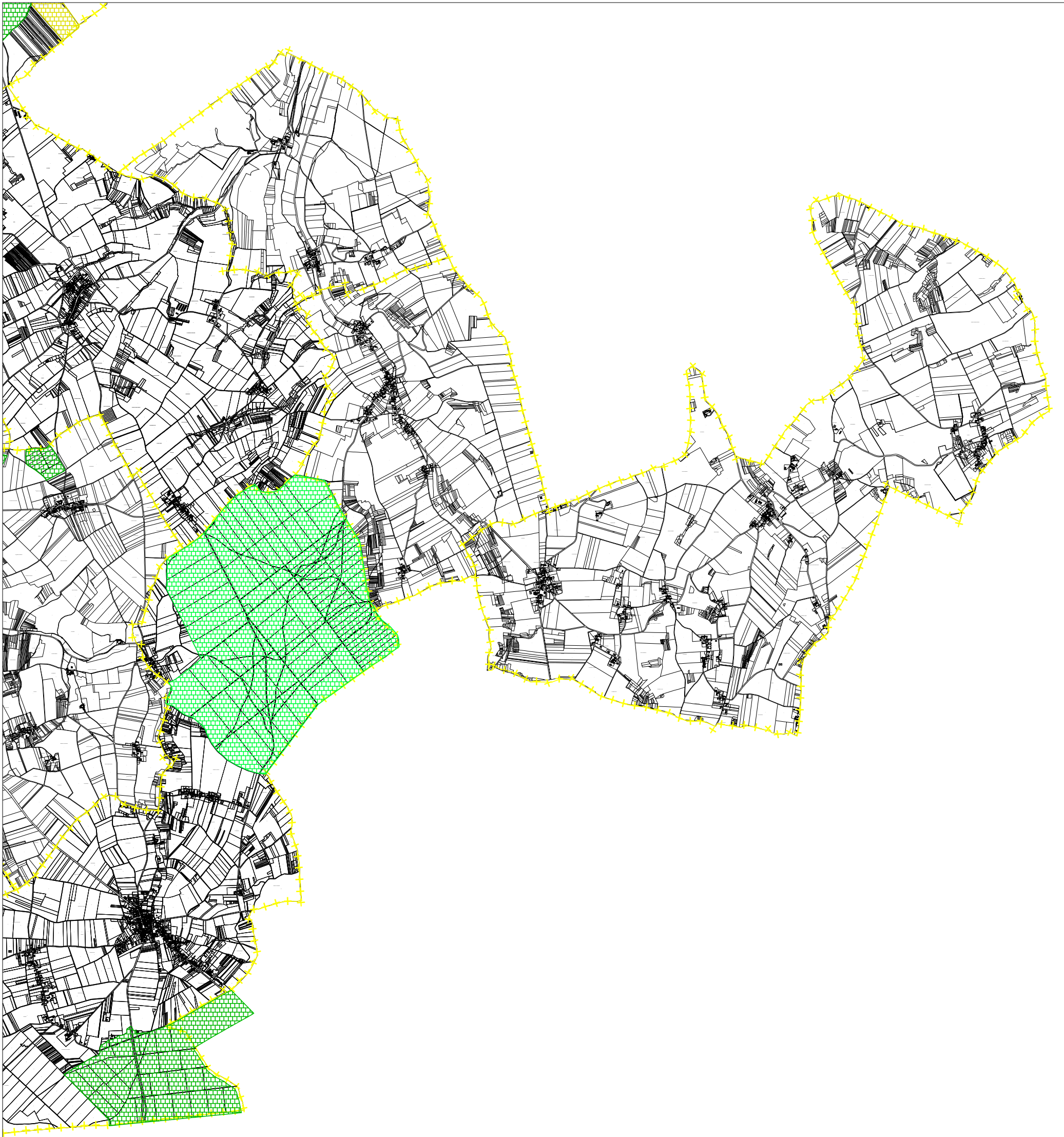
Forêts I.I.B.R.B.S


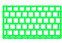
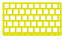

Limites communales





-  Forêts Communales
-  Forêts Domaniales
-  Forêts I.I.B.R.B.S
-  Limites communales



-  Forêts Communales
-  Forêts Domaniales
-  Forêts I.I.B.R.B.S
-  Limites communales